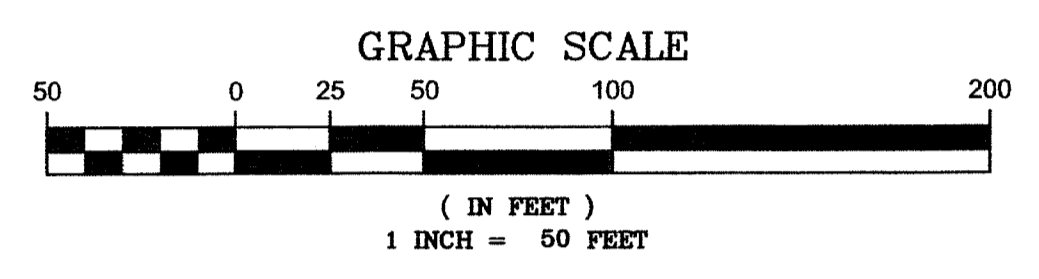
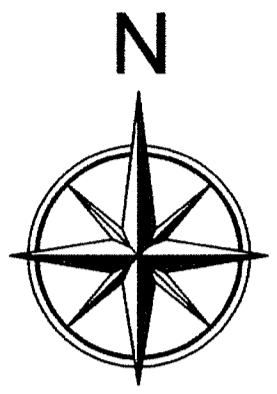


# PALM BEACH GARDENS FIRE STATION No. 2

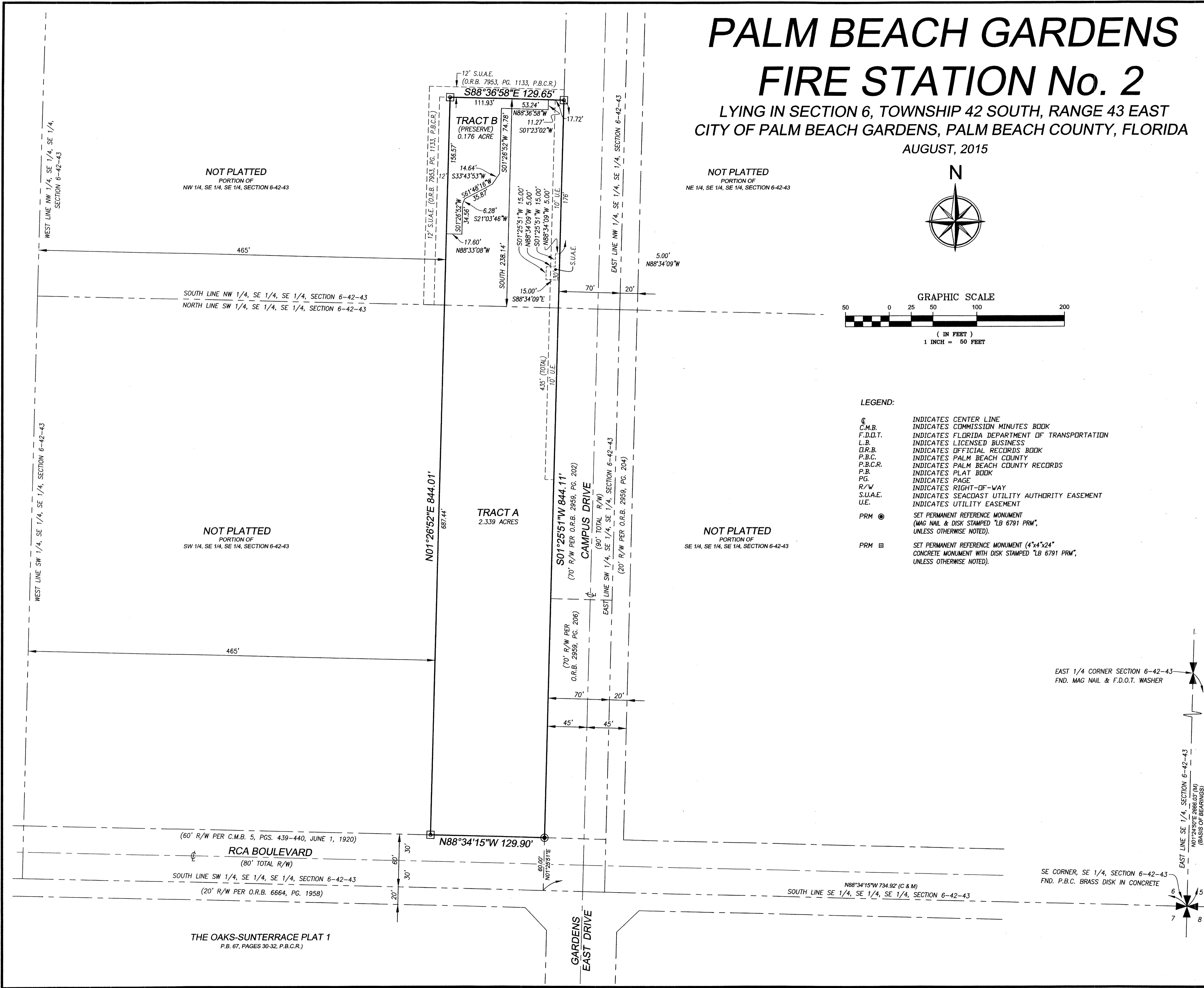
LYING IN SECTION 6, TOWNSHIP 42 SOUTH, RANGE 43 EAST  
CITY OF PALM BEACH GARDENS, PALM BEACH COUNTY, FLORIDA

AUGUST, 2015



**LEGEND:**

- ⊕ INDICATES CENTER LINE
- C.M.B. INDICATES COMMISSION MINUTES BOOK
- F.D.O.T. INDICATES FLORIDA DEPARTMENT OF TRANSPORTATION
- L.B. INDICATES LICENSED BUSINESS
- O.R.B. INDICATES OFFICIAL RECORDS BOOK
- P.B.C. INDICATES PALM BEACH COUNTY
- P.B.C.R. INDICATES PALM BEACH COUNTY RECORDS
- P.B. INDICATES PLAT BOOK
- PG. INDICATES PAGE
- R/W INDICATES RIGHT-OF-WAY
- S.U.A.E. INDICATES SEACOAST UTILITY AUTHORITY EASEMENT
- U.E. INDICATES UTILITY EASEMENT
- PRM ⊙ SET PERMANENT REFERENCE MONUMENT (MAG NAIL & DISK STAMPED "LB 6791 PRM", UNLESS OTHERWISE NOTED).
- PRM ⊠ SET PERMANENT REFERENCE MONUMENT (4"x4"x24" CONCRETE MONUMENT WITH DISK STAMPED "LB 6791 PRM", UNLESS OTHERWISE NOTED).



EAST 1/4 CORNER SECTION 6-42-43  
FND. MAG NAIL & F.D.O.T. WASHER

SE CORNER, SE 1/4, SECTION 6-42-43  
FND. P.B.C. BRASS DISK IN CONCRETE

THIS INSTRUMENT PREPARED BY:  
**David E. Rohal, P.S.M. No. LS4315**  
CERTIFICATE OF AUTHORIZATION NO. LB8791  
MARCH, 2015

**Calvin, Giordano & Associates, Inc.**  
EXCEPTIONAL SOLUTIONS™  
560 Village Boulevard • Suite 340 • West Palm Beach, FL 33409  
Phone: 561.681.6161 • Fax: 561.684.6360